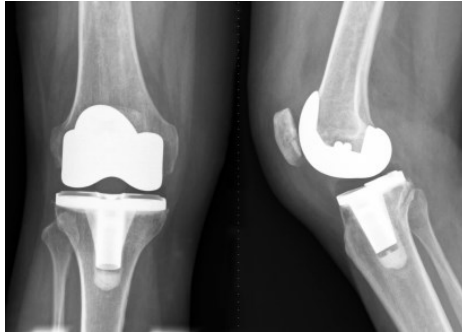


Metal Contact Allergy



What We Test For

Metals are frequently used in orthopedic devices, and some metals are well recognized as a common cause of allergic contact dermatitis. The metal patch series test used in our office contains the metals most commonly used in orthopedic implants as well methacrylate. We include other metals such as gold since some patients allergic to jewelry are allergic to gold, not nickel.

Metal Patch Testing

This test will involve **three** visits to the office, usually occurring on a **Monday, Wednesday, and the following Monday.**

On your first patch testing visit you will have strips of patch test chambers filled with the suspect metals placed on your back held in place with paper tape.

It is recommended that you **keep the area**



dry (do NOT Shower) during this time period while avoiding physical exercise that could cause excessive perspiration and detachment of the test unit.

The chamber units will be removed in 48 hours with the first reading being done after the removal.

We also recommend that you wear loose fitting clothing, as this helps to prevent the

patches from peeling or loosening from the skin.

Markers will be used to landmark where the patches were placed, please wear a black or dark loose fitting shirt.

Abstain from taking cortisone containing medications, and avoid prolonged sun exposure. Speak with Dr. Selvaggi about medications you are taking.

You will return for your third reading in 48-72 hours.

Upon completion of this procedure you will be provided with the results, advised of any contact allergies you may have and how to minimize possible reoccurrence

